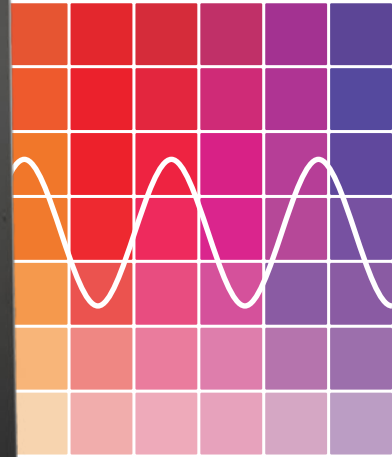
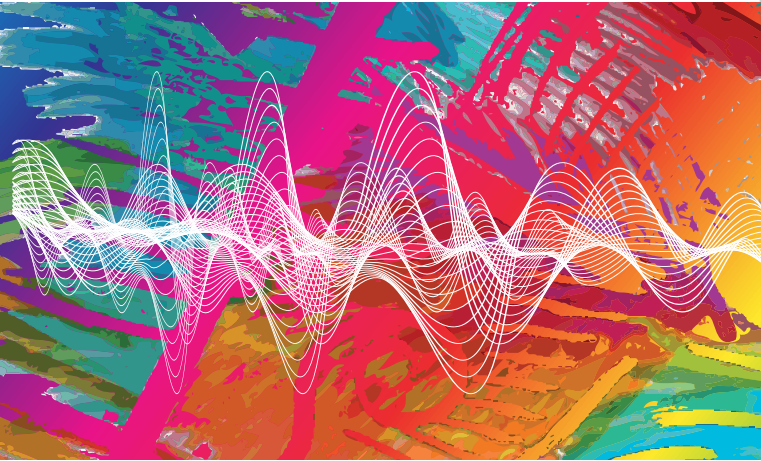


The ultimate in clean power



# NUMERIC<sup>®</sup> **Onfiniti** 1 - 10 kVA UPS

Reliable and Efficient  
Single Phase UPS Solutions

India's No.1 UPS Company\*

A Group brand



# Onfiniti

## Single Phase UPS

Today's business continuity demands a cost-effective power protection solution, for ensuring power continuity and power quality with optimal total cost of ownership (TCO). The new range of Onfiniti is a true online double conversion topology, designed with flexible product options to suit customer requirements.

Onfiniti supplies maximum protection and power quality for entry level servers, workstations, communication equipments, ATMs, etc..

### Product Snapshot

Power Rating	1 kVA - 10 kVA at 0.8 pf
Configuration	Tower
Voltage	220V/ 230V/ 240V
Input Power Factor	0.99

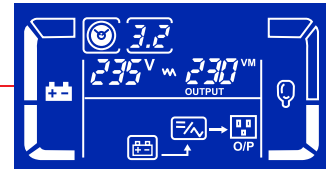


# FEATURES

01

## Display panel

The display interface provides real-time status of critical diagnostics and essential parameters like load demand, input voltage, battery status, etc.



02

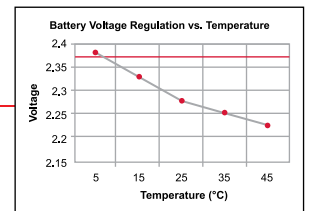
## Flexible battery configuration

Battery blocks and their capacity can be configured by the user, as per the requirement.

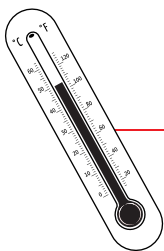
03

## Temperature compensated battery charger

Onfiniti UPS automatically optimise the charging current, according to the operating temperature of the batteries. This feature extends the battery life considerably.



Temp. Compensated Charge Voltage  
Fixed Charge Voltage



04

## 50°C operation

Onfiniti UPS withstand high operating temperatures. They can operate at 40°C at 100% capacity and upto 50°C at 80% capacity.

05

## Upgradable charger

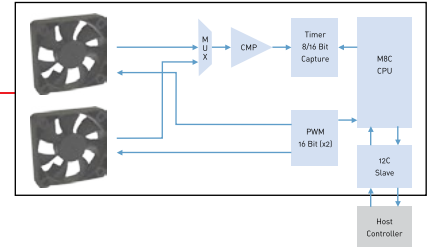
The charger can be upgraded to extend the backup for over four hours.



06

### Polarity protection for battery connection

Polarity protection ensures that the battery connections on UPS are managed and installation is made easy.



07

### Intelligent fan operation

Intelligent fan operation regulates fan speed, depending on UPS requirements. It decreases power consumption and fan noise.



08

### Built-in isolation transformer

Onfiniti UPS offer built-in isolation transformer as an option for high power density output.

09

### Advanced communication

The SNMP option in Onfiniti UPS provides comprehensive UPS management and flexible configuration via web browser, NMS, Java Applet, Telnet, SNMP or Hyper Terminal. This technology provides reliable automatic event notification via E-mail, SMS\*, WAP\* and SNMP Trap. The included View Power software provides automatic shutdown for multiple PCs over the network.

\* Additional accessories required



10

### Over-voltage cut-off device

Over-voltage cut-off device protects the UPS from high input voltage and increases the stability and performance of UPS.



11

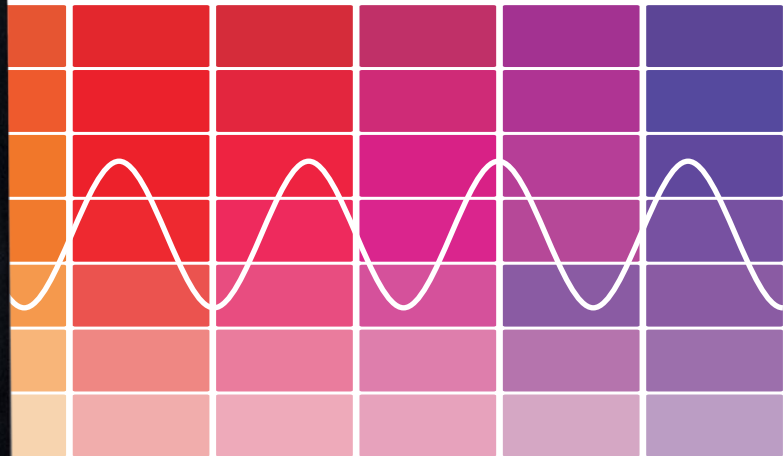
### Output voltage selection

Onfiniti UPS offer option to choose the output voltage (200V\* / 208V\* / 220V / 230V / 240V).

\* with output de-rating

# SPECIFICATION

Parameters	1 kVA	2 kVA	3 kVA	5 kVA	6 kVA	7.5 kVA	10 kVA
<b>Topology</b>	True On-line Double Conversion UPS						
Output power capacity	800 W	1600 W	2400 W	4000 W	4800 W	6000 W	8000 W
<b>Input</b>							
Phase	Single Phase						
Voltage	230V AC						
Voltage range	160V - 300V AC						
	110V - 300V AC @ 60% load			110V - 300V AC @ 50% load			
Power factor	0.99						
Current THD	<10%						
<b>Battery</b>	36V	72V / 96V		192 - 240V			
Battery charging	Constant Current & Constant Voltage						
<b>Output</b>							
Nominal output voltage	220VAC / 230VAC / 240VAC ± 1%						
Frequency	50Hz ± 0.1Hz						
Frequency synchronisation	47.5 to 52.5Hz						
Voltage THD	<3% Linear Load			<2% Linear Load			
	<5% Non Linear Load			<5% Non Linear Load			
<b>Efficiency</b>							
AC/AC ( overall efficiency )	Up to 90%			Up to 92%			
Eco mode	Up to 97%						
Overload capacity							
105 - 110%	10 min			3 min			
111 - 130%	1 min			30 sec			
<b>Communication</b>							
RS232	Available						
USB com port	Available						
Intelligent slot	Optional - SNMP / MODBUS / Dry Contacts						
Operating temperature	0~40°C Continuous						
<b>Electrical</b>							
Input terminal	Terminal			Input Breaker + Terminal			
Output terminal	4 x India type 6Amps	6 x India type 6Amps - 2kVA		Terminal			
		6 x India type 6Amps+TB-3kVA					
<b>Features</b>							
Converter mode	Available						
Bypass parameters configurable	Available						
Display	LCD Display			LED + LCD Display			
<b>Mechanical</b>							
Ingress protection	IP 20						
Standards							
Safety	EN 62040-1						
EMI / EMC	EN 62040-2						
Performance	IEC 62040-3						
Certification	CE						
Dimension for FM (W x D x H) in mm	145 x 405 x 235	190 x 435 x 335		260 x 482 x 488			
Dimension for FMI (W x D x H) in mm	190 x 465 x 465	190 x 435 x 595		260 x 482 x 871			
Weight in kg (FM / FMI)	6.2 / 21.3	11.5 / 35.5	12 / 43.5	18.9 / 51		22.8 / 63	
FM - Floor Mount UPS. FMI - Floor Mount UPS with Isolation transformer							



## REGIONAL OFFICES:

### BANGALORE

No. 794, 12th Main, 1st Cross  
Hal II Stage, Indiranagar,  
Bangalore - 560 008  
Phone Nos: 080 - 43038000/ 01/ 02/ 03/ 04

### COCHIN

CC54/481 (Old No. 39/ 5896A, 5896B & 5896C)  
Merlin House  
Parambitara Cross Road  
Panampilly Nagar  
Cochin - 682 036  
Phone Nos: 0484 - 2324616/ 2322334

### HYDERABAD

1-8-569 To 573, 3rd Floor, EGK Arcade  
Beside Bawachi Hotel, Azamabad  
RTC X Roads, Hyderabad - 500 020  
Phone Nos: 040 - 27603048/ 27662817

### MADURAI

No.1, Pillayar Koil Street  
S.S.Colony  
Madurai - 625 010  
Phone Nos: 0452 - 2604555/ 2602629

### CHENNAI

"Numeric House"  
No. 5, Sir P. S. Sivasamy Salai,  
Mylapore, Chennai - 600 004  
Phone Nos: 044 - 24982502, 24982511, 24990466,  
24990064, 24993266

### GUWAHATI

House No. 02, Rajgarh Girls High School Road  
(Behind Rajgarh Girls High School)  
Guwahati - 781 007  
Phone Nos: 0361 - 2450322/ 2451987

### KOLKATA

242, 2nd Floor  
Rash Behari Avenue Road  
Kolkata - 700 019  
Phone Nos: 033 - 24609233, 24609234, 24609032

### NEW DELHI

Aggarwal Complex, Building C1 & C2, 1st Floor  
Block A1B, Local Shopping Complex, Janakpuri  
New Delhi - 110 058  
Phone Nos: 011 - 25571347/ 48/ 49

### CHANDIGARH

SCO 31, 1st Floor  
Kalgidhar Enclaves  
Kalka - Zirakpur Highway, Zirakpur  
Punjab - 140 105  
Phone No: 01762 - 521138

### COIMBATORE

Kovai Towers  
44, 2nd Floor,  
Balasundram Road,  
Coimbatore - 641 018  
Phone Nos: 0422 - 2242290/ 3716/ 3740

### MUMBAI

202, 2nd Floor, ECO SPACE  
CTS No. 56 (Pt) Mogra Village,  
Andheri (East) Mumbai - 400 069  
Phone Nos: 022 - 28373953 / 54 / 55 / 56



No.1 Power Electronics Company  
No.1 On Line UPS Manufacturer  
No.1 Line Interactive UPS Manufacturer  
\*Source: Softdisk



Numeric House No. 5, Sir P.S. Sivasamy Salai, Mylapore, Chennai - 600 004, India | Tel: +91 44 2499 3266  
Fax: +91 44 2499 8210 | E-mail: info@numericups.com Visit [www.numericups.com](http://www.numericups.com) for list of our service centres  
For any queries call us toll free at 1800 425 3266