



Sabse Pure Water with

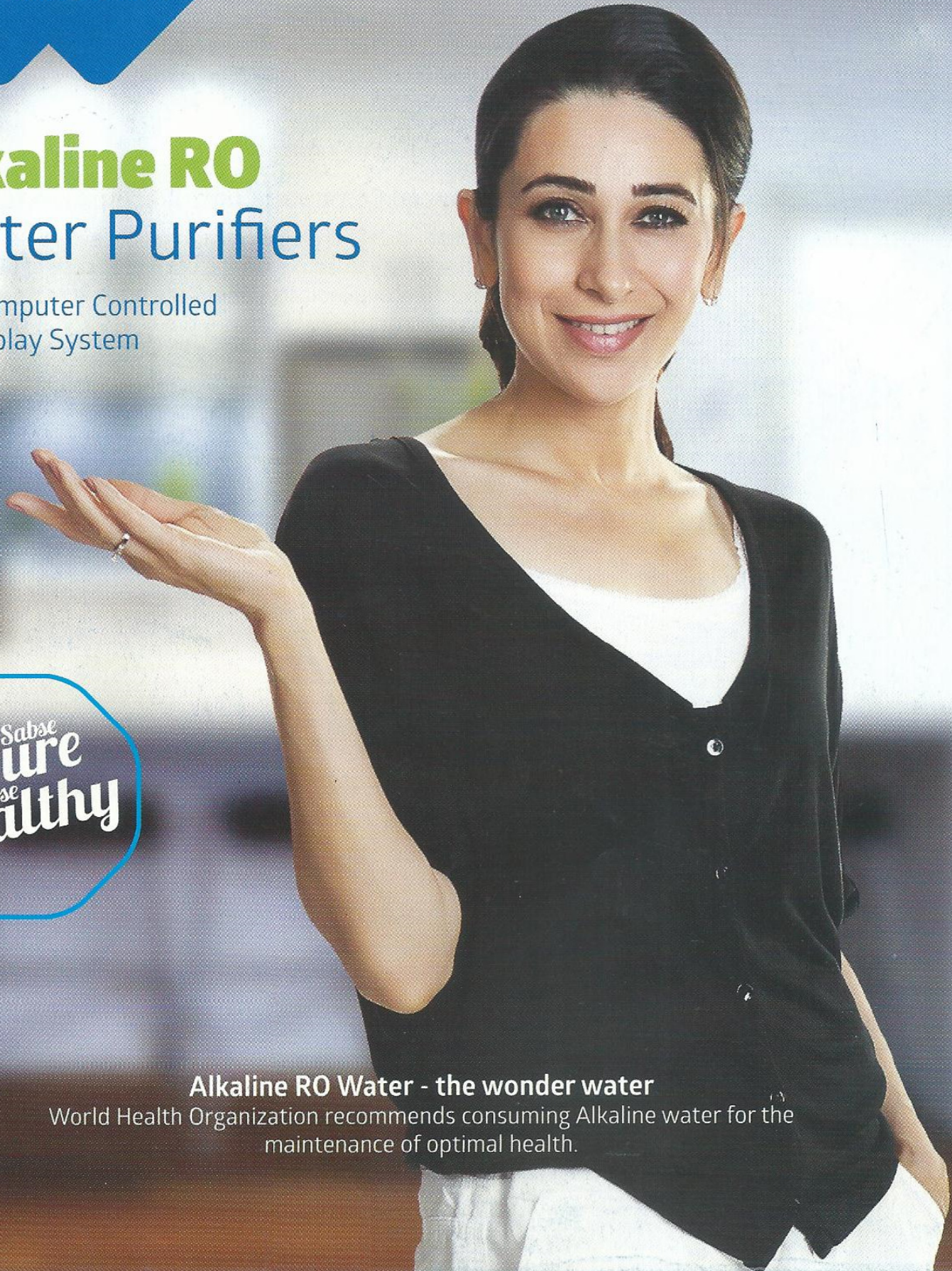
Minerals

Alkaline

LED
Display

Alkaline RO Water Purifiers

With Computer Controlled
LED Display System



Alkaline RO Water - the wonder water

World Health Organization recommends consuming Alkaline water for the maintenance of optimal health.



Recommended for

Purifies all kinds of water

Works on high TDS

Eliminates toughest of impurities

Energy efficient- power saving

For health conscious people

100% chemical free water



Design

Beautiful to look at

Hygienic tap-outlet

Push fit components

A size that fits all kitchens

Safe material



Storage and Installation

Built-in 12 Litres storage tank

Easy to install

Economical to maintain



Blue Mount Care

Focused R&D

Hold Highest Certifications

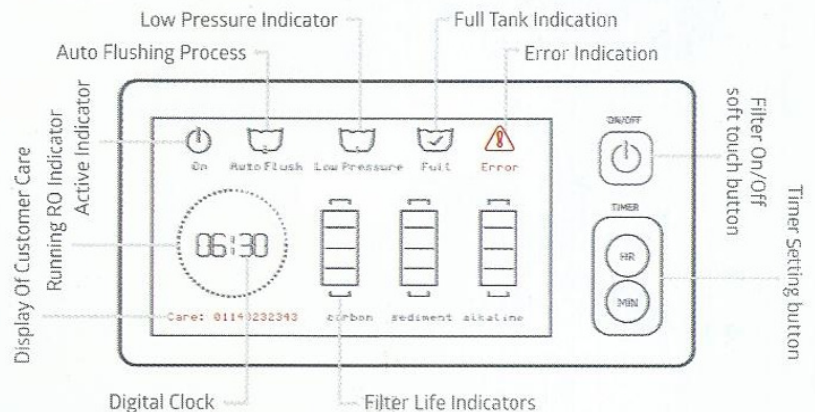
1 year of free on-site support

Blue Mount Alkaline RO Technology

Alkaline RO purification technology provides purification by alkaline RO combined with pH + Carbon + Sediments filter equipped with LED Display. The carbon and sediments filter remove both suspended and dissolved impurities such as chemicals and various metal salts. Its state-of-the-art alkaline filter and RO collectively purify water while the pH filter maintains the pH level as well as minerals essential for human body.

Advanced Computer Controlled LED System

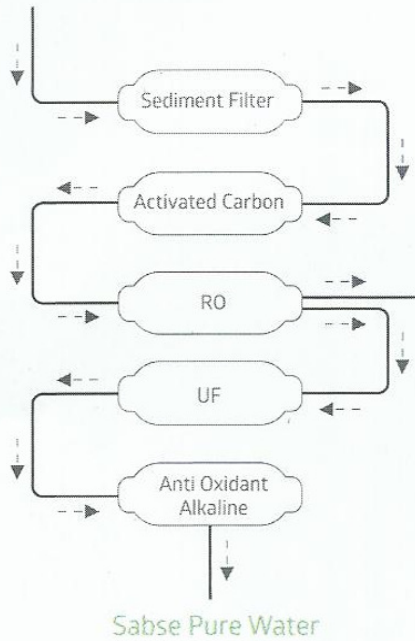
The High-tech LED display system is like a purifier robot. It has the ability to auto stop the purifier in case of any leakage or overflow and indicates about the error in real time. The computer controlled LED has a time based filter change indicator, hence you never have to worry about when to change the filters, it will inform you automatically.



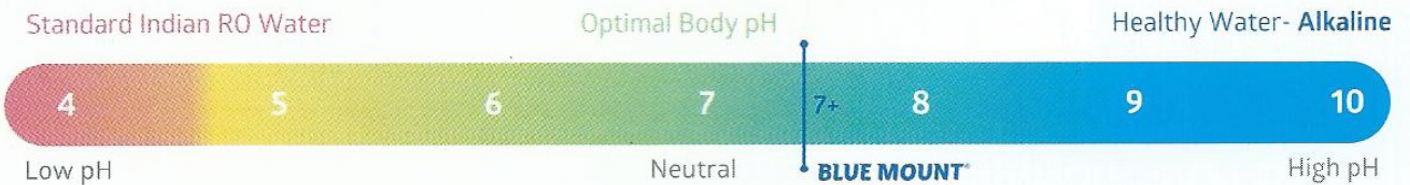
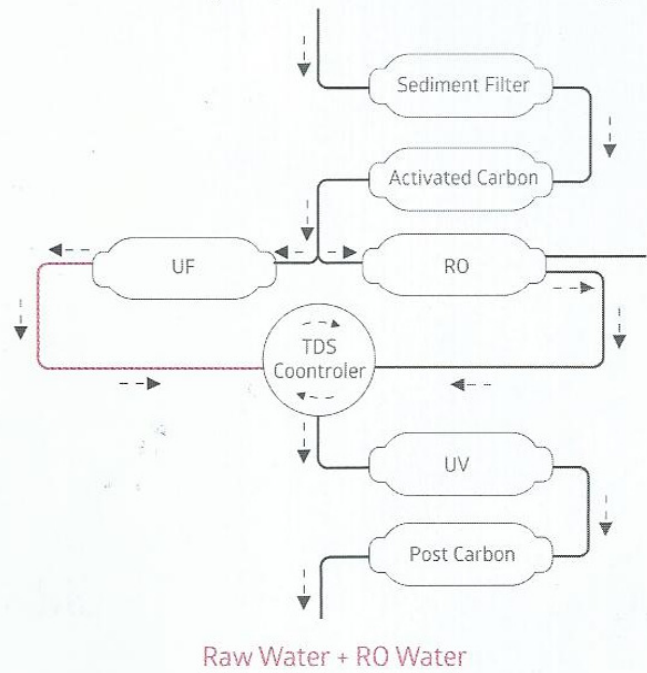
- Handy on and off button to increase filter life and saves power.
- Indicates the non functioning and life of important filters.
- A clock to help people working in kitchen to multi-task and be on time.
- Inbuilt 30 sec. auto cleaning to increase the life of RO by flushing the membrane.
- It blinks on any error related to the non working of LPS, auto flush and filter malfunction.
- Customer to get in touch directly with company for definite services

Blue Mounts unique technology brings with itself the power of RO without mixing purified with impure water to maintain the TDS. Instead its NFS certified antioxidant alkaline filter purifies water while persistently maintaining natural minerals essential for human body.

Blue Mounts Alkaline RO technology



Misleading Popular Brands Technology



Note: This chart is for comparison purposes only and is not intended as an absolute measurement method.

Benefits of Blue Mount Alkaline Water

Recommended by thousands of doctors.

Maintains pH level and balances high acid level in times of stress, lack of sleep and over consumption of acidic foods, such as processed food, alcohol etc., making your body less prone to diseases.

Keeps your body energized for a longer duration of time and makes you feel fresh and remain healthy.

A popular choice for bodybuilders, athletes, and fitness enthusiasts.

During high workloads when lactate production exceeds, alkaline water increases your Anaerobic Threshold, thus the ability to clear lactate and sustain physical activity for longer periods of time.





Product Code: BM51

Blue Mount Elite Star

Technology: Alkaline RO+ UF Technology with LED Display System
Stages: Sediment + Activated Carbon + RO + Antioxidant Alkaline + UF Membrane

Storage: 12 Litres of purified water storage

Installation: Wall Mounted or Counter Top Design

Application: Suitable for purification of Brackish/Tap/Municipal Water

Operation: Fully automatic with filter life indicator & clock

Product Dimension: 16.7 (L) x 9.9 (W) x 21.1 (H) inch.



Product Code: BM53

Blue Mount Elite+

Technology: Alkaline RO Technology with LED Display System

Stages: Sediment + Activated Carbon + RO + Antioxidant Alkaline

Storage: 12 Litres of purified water storage

Installation: Wall Mounted or Counter Top Design

Application: Suitable for purification of Brackish/Tap/Municipal Water

Operation: Fully automatic with filter life indicator & clock

Product Dimension: 16.7 (L) x 9.9 (W) x 21.1 (H) inch.

Product Code: BM52

Blue Mount Elite

Technology: Alkaline RO Technology with LED Display System

Stages: Sediment + Activated Carbon + RO + Antioxidant Alkaline

Storage: 1 External 4 Gallon Pressure Tank

Installation: Under the Sink Design for Modular Kitchen

Application: Suitable for purification of Brackish/Tap/Municipal Water

Operation: Fully automatic with filter life indicator & clock

Product Dimension: 16.7 (L) x 8.7 (W) x 12 (H) inch.





Product Code: BM55

Blue Mount Crown Star

Technology: Alkaline RO + UF Technology with Storage

Stages: Sediment + Activated Carbon + RO + Antioxidant Alkaline + UF Membrane

Storage: 12 Litres of purified water storage

Installation: Wall Mounted or Counter Top Design

Application: Suitable for purification of Brackish/Tap/Municipal Water

Operation: Fully automatic with Auto Cut-off

Product Dimension: 16.7 (L) x 9.9 (W) x 21.1 (H) inch.



Product Code: BM54

Blue Mount Crown+

Technology: Alkaline RO Technology with Storage

Stages: Sediment + Activated Carbon + RO + Antioxidant Alkaline

Storage: 12 Litres of purified water storage

Installation: Wall Mounted or Counter Top Design

Application: Suitable for purification of Brackish/Tap/Municipal Water

Operation: Fully automatic with Auto Cut-off

Product Dimension: 16.7 (L) x 9.9 (W) x 21.1 (H) inch.



Product Code: BM50

Blue Mount Crown

Technology: Alkaline RO Technology

Stages: Sediment + Activated Carbon + RO + Antioxidant Alkaline

Storage: 4 Gallon Pressure Tank Optional, Easy to connect with water cooler & dispensers

Installation: Wall Mounted or Under the Sink

Application: Suitable for purification of Brackish/Tap/Municipal Water

Operation: Fully automatic with Pressure Tank

Product Dimension: 16.7 (L) x 8.7 (W) x 12 (H) inch.



Sabse Pure. Sabse Healthy.

Working towards a better future.

Blue Mount is a new-age water purifier brand which originates from India. We have taken a challenge- to provide 100% pure and healthy water in every household.

We bring a wide range of technologically advanced water purifier for not just pure but healthy water. These are designed as per present world water scenario and human needs and will suit one and all.

For more information, visit our website
www.bluemountro.com



TUV Certified



CE Certified



Tested by Spectro



Collaborated with
Biosera NSF Certified Safety

For free support and demo call +91 11 49491515 or SMS BMRO to 56677

Dealer Contact

Blue Mount Appliances Pvt. Ltd.

B-96, Pushpanjali Enclave, Pitampura, New Delhi-110034, INDIA
Phone: +91 11 49491500-01 | Email: purity@bluemountro.com

© 2014 Blue Mount Appliances Pvt. Ltd.

All rights reserved. Blue Mount, the Blue Mount logo, Tag line, Product, Filters, and Parts are trademarks of Blue Mount Appliances Pvt. Ltd. registered in India.

7R09